



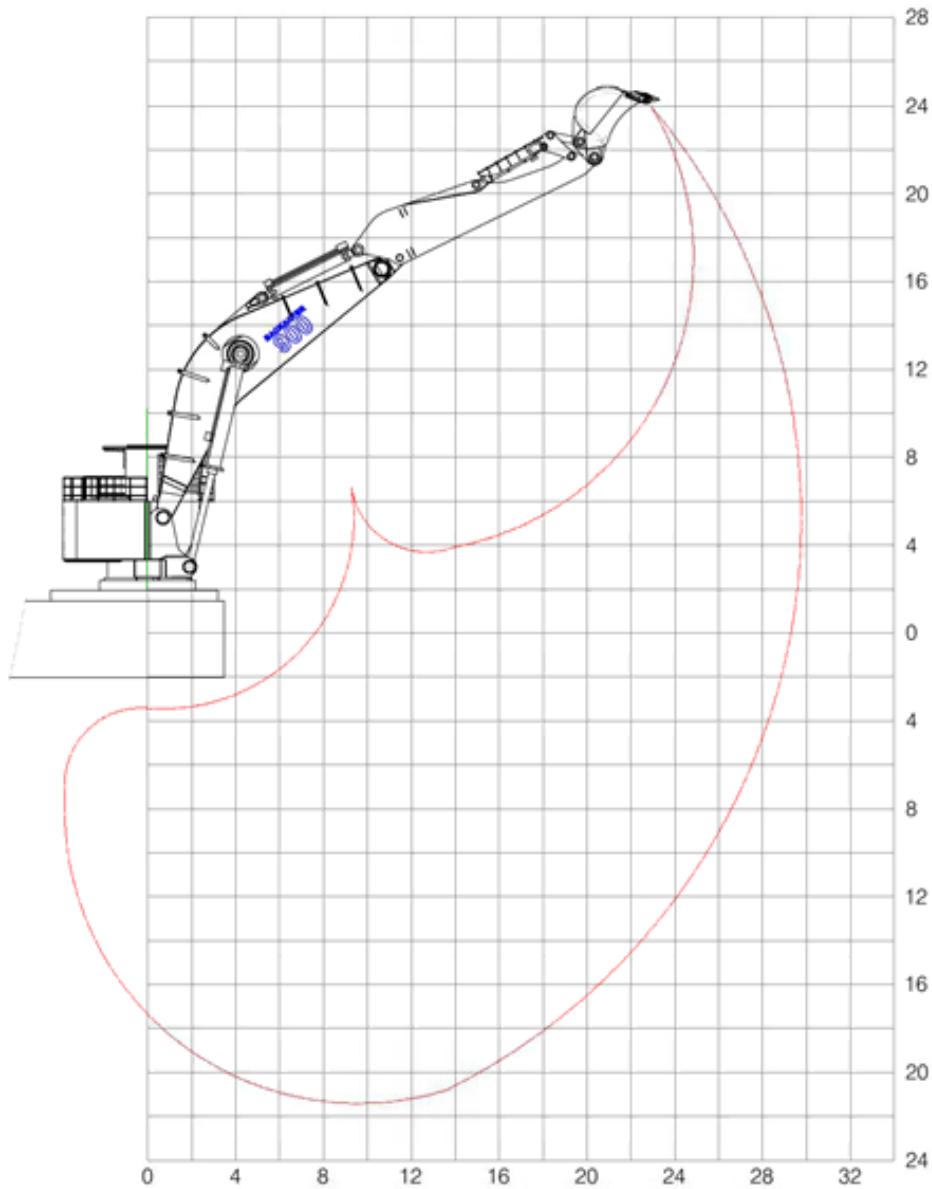
Specifications

Built	2014	DIMENSIONS	
Classification Society	Bureau Veritas	Lenth Overall	65.00m
CAPACITIES		Hull Length	63.00m
Maximum Dredging Depth	26m	Breadth	19.00m
Bucket Capacity	18m ³ , 13m ³ , 10m ³ , 7m ³	Depth	4.00m
Fuel	167,000L	Draft	2.60m
Hydraulic Oil	12,000L	GRT	1345
Potable Water	61,000L		
MACHINERY			
Total Installed Power	2933hp (2200kW) Excavator: 2533hp (1902kW) – Cummins QSK60 QSK11		
Deck Cranes	1 x 60t & 1 x 5t		
Spud Length	30m		

AUSTRALIA OFFICE

149 Sippy Downs Drive, Buderim, QLD 4556 Australia
PO Box 519, Buderim, QLD 4556 Australia
+61 5445 5977

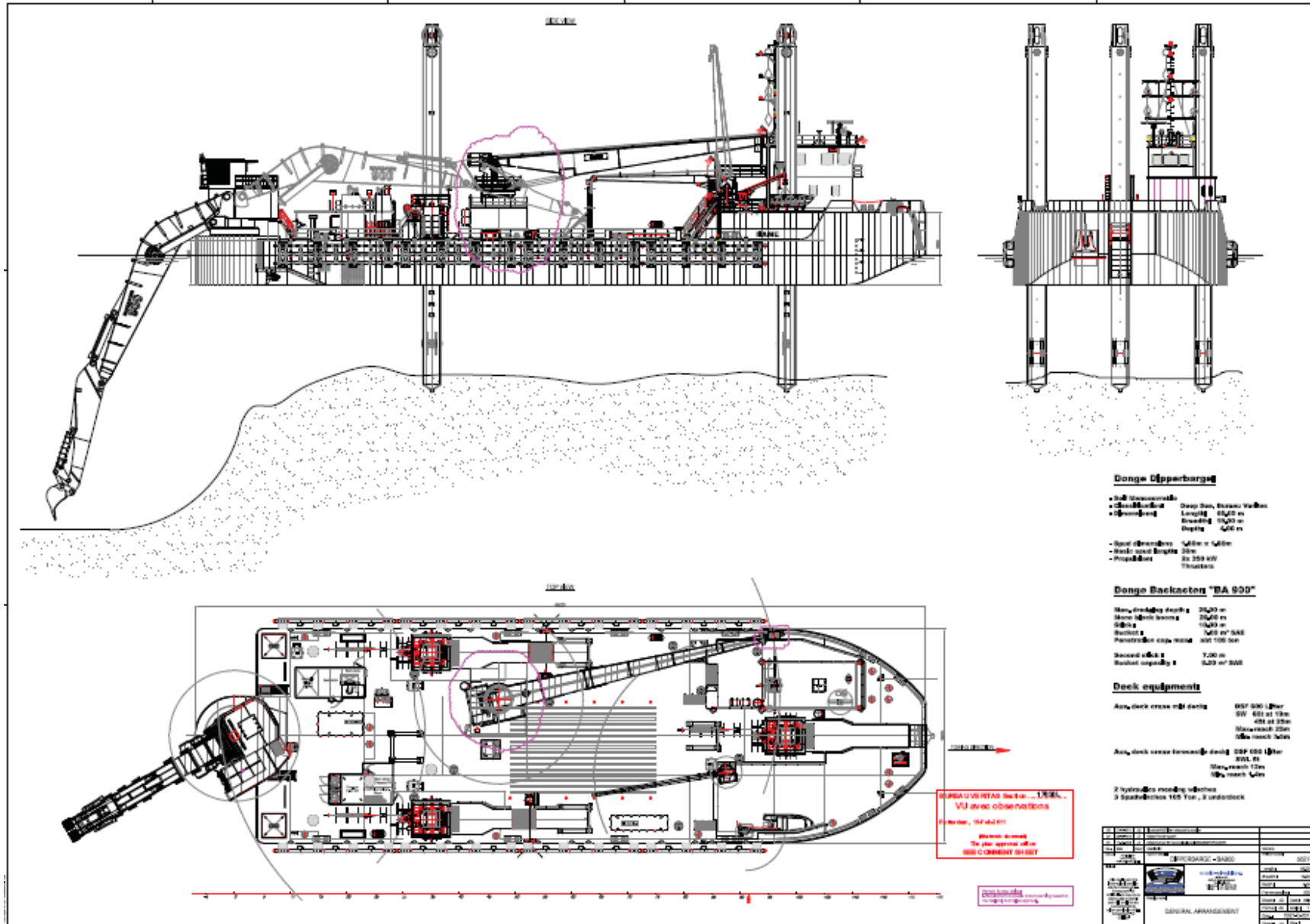
Mono 16,0m / Stick 10m / Bucket 14m³
DONGE BACKACTER 900



Dredging Diagram



Woomera Backhoe Dredge



Donge Opperburg

- **Diepste diepte** Diep Diep, Bureau Veritas
- **Diepte** Lengte 18,00 m
Breedte 19,00 m
Diepte 4,00 m
- **Diepste diepte** 4,00 m
- **Diepste diepte** 20m
- **Diepste diepte** 20 200 kW
Turbines

Donge Backhoer "BA 900"

- **Diepste diepte** 20,00 m
- **Diepste diepte** 20,00 m
- **Diepste diepte** 10,00 m
- **Diepste diepte** 1,00 m
- **Diepste diepte** 0,20 m

Deck equipments

- **Deck crane (1) deck** DCP 500 10m
500 kW
400 at 30m
Min. reach 20m
10m reach 30m
- **Deck crane (2) deck** DCP 500 10m
500 kW
400 at 30m
Min. reach 20m
10m reach 30m
- **2 hydraulic mooring winches**
- **3 Spandhoes 100 Ton, 3 Underdeck**

• **OPMERKINGEN** ...
• **VU** avec observations
• **10/10/11**
• **10/10/11**
• **10/10/11**
• **10/10/11**

Code	Description	Quantité	Unité
01	OPPERBURG - 3-BAU	1	STK
02	BAKHOER - 900	1	STK
03	DECK CRANE (1)	1	STK
04	DECK CRANE (2)	1	STK
05	HYDRAULIC MOORING WINCH	2	STK
06	SPANDHOES	3	STK
07	UNDERDECK	3	STK

• **OPMERKINGEN** ...
• **VU** avec observations
• **10/10/11**
• **10/10/11**
• **10/10/11**